

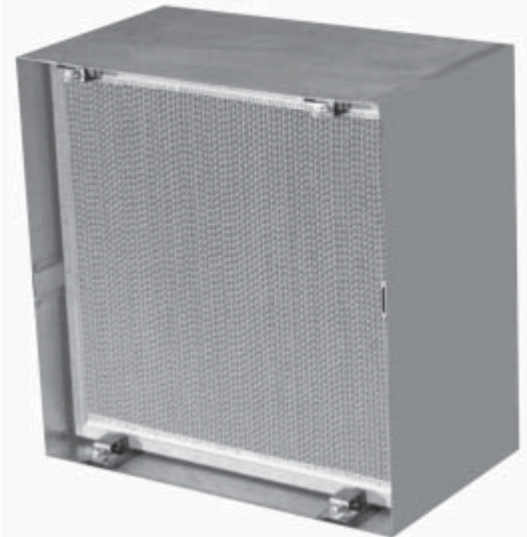
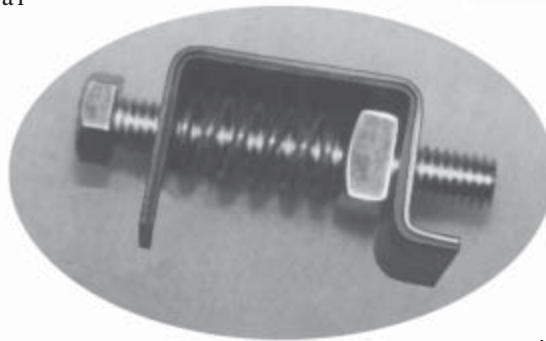
**PRODUCT
DATA**
SURE-LINE™
SERIES HDS
PD-SLHDS-03A
JANUARY 2003

**HIGH
EFFICIENCY
AIR FILTRATION
EQUIPMENT**

**SURE-LINE™
SERIES HDS**
HEAVY DUTY SPRING LOADED
HEPA FILTER HOLDING FRAME

HDS HEPA Lock Frame

The SURE-LINE Series HDS, the Heavy Duty Spring Lock, is a HEPA Holding Frame designed to house High Efficiency HEPA Filters. Front Access, the HDS Holding Frames are utilized in several applications where Side Access is either restricted or not preferred. The HDS can function as a single unit or can be built up in banks, modular style, to accommodate any CFM capacity. And unlike competitor models, BLC's HDS fully encloses and houses the entire HEPA Filter. No swing bolts. No partially supported filters. No two-men operation for holding and positioning. BLC's HDS allows for quick, effective one-man change-outs.



Special HDS HEPA Lock Holding Frames can also be fabricated for many custom applications. Most importantly, a 2" or 4" prefilter option allows 2-stage filtration in one bank. Other special frame construction options include: 304 Stainless Steel, Epoxy Coating, Air Dried Enamel Finish. Consult factory for details.

**O
P
T
I
O
N
S**

Construction

Constructed of 16 gauge aluminized steel, HDS Frames are solidly welded to prevent any air bypass. This stops any air leakage through frame joints and provides an economical and quality product that matches the integrity of the HEPA Filter. HDS Frames are provided with internal locating spacers that properly align the HEPA Filter inside the frame. Supplied with 7/32" pre-punched mounting holes, the HDS Frames can be banked for easy assembly.

Four (4) Heavy Duty Spring Bolts that are inserted into locking slots apply even pressure and seal the downstream gasket of the HEPA Filter against the Holding Frame. Fabricated and assembled from Zinc Plated Steel, the Spring

Bolts allow a greater degree of compression (600 ft. lbs. of positive pressure per HEPA Filter) and control than any other type of bolts, making the HDS the best precision Sealing Frame in the industry. Its 16 gauge aluminized steel construction supplies the rigidity to allow efficient assembly into frame banks. Additionally, the HDS Frames are supplied with a downstream reinforcement flange for even greater structural support. This rigid support, combined with the aluminized steel's superior corrosion and heat resistance, results in extended product life and improves its quality appearance. Aluminized steel conforms to ASTM Specification A463 and is used for such applications as space heaters, mufflers and incinerators which are subjected to extremely corrosive conditions.

Corporate Headquarters
P.O. Box 14187,
Louisville, Kentucky 40214
Phone: (502) 366-6002
Fax: (502) 366-6255

E-Mail: askus@blcind.com

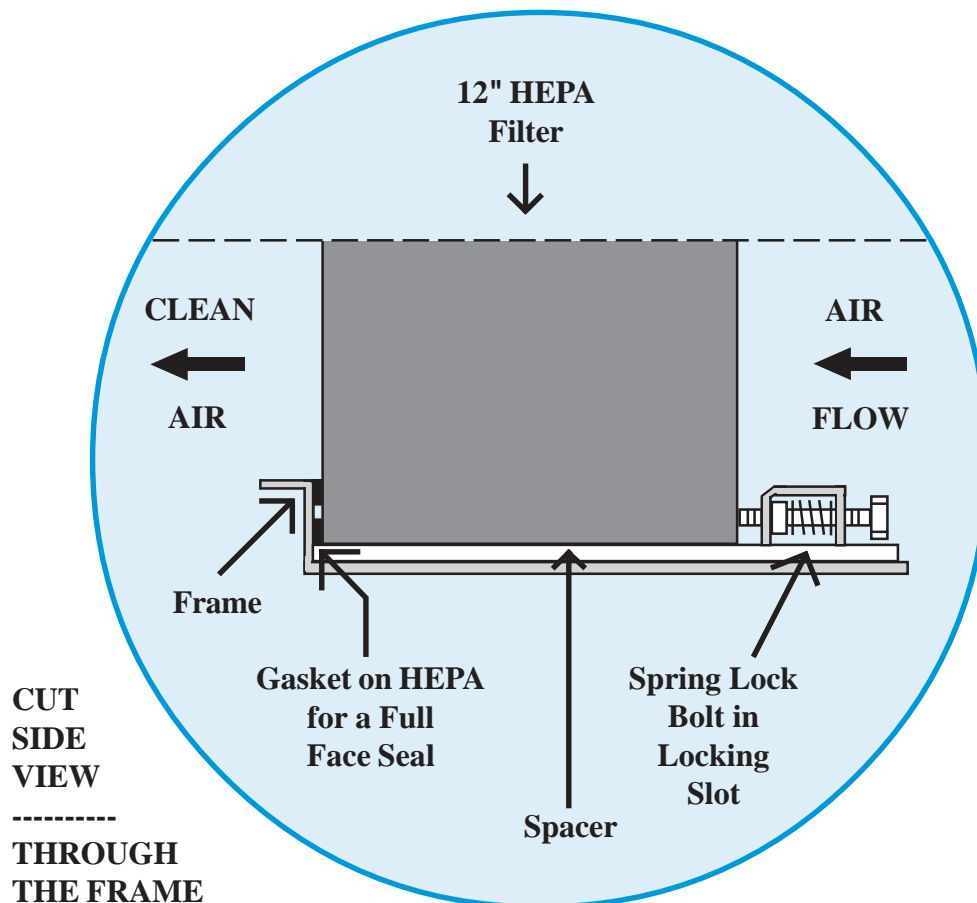
BLC-WEST
Phone: (480) 839-5333
Fax: (480) 839-1584

www.blcind.com

We reserve the right to make changes in product design and product specifications without prior notice or obligation.

BLC INDUSTRIES INC.
Breathe Easy, We Have The Line On Air Filtration.

HDS HEPA Lock Frame: Locking Mechanism



Dimensional Data

HEAVY DUTY SPRING LOADED HEPA HOLDING FRAMES FOR 6" HEPA FILTERS			
MODEL NUMBER	NOMINAL SIZE	ACTUAL FRAME DIMENSIONS	HEPA FILTER SIZE
SLHDS091224	12 x 24 x 9	12 x 24 x 9 3/8	11 3/8 x 23 3/8 x 5 7/8
SLHDS091325	13 x 25 x 9	12 7/8 x 24 7/8 x 9 3/8	12 x 24 x 5 7/8
SLHDS092424	24 x 24 x 9	24 x 24 x 9 3/8	23 3/8 x 23 3/8 x 5 7/8
SLHDS092525	25 x 25 x 9	24 7/8 x 24 7/8 x 9 3/8	24 x 24 x 5 7/8
SLHDS092531	25 x 31 x 9	24 7/8 x 30 7/8 x 9 3/8	24 x 30 x 5 7/8
HEAVY DUTY SPRING LOADED HEPA HOLDING FRAMES FOR 12" HEPA FILTERS			
MODEL NUMBER	NOMINAL SIZE	ACTUAL FRAME DIMENSIONS	HEPA FILTER SIZE
SLHDS151224	12 x 24 x 15	12 x 24 x 15	11 3/8 x 23 3/8 x 11 1/2
SLHDS151325	13 x 25 x 15	12 7/8 x 24 7/8 x 15	12 x 24 x 11 1/2
SLHDS152424	24 x 24 x 15	24 x 24 x 15	23 3/8 x 23 3/8 x 11 1/2
SLHDS152525	25 x 25 x 15	24 7/8 x 24 7/8 x 15	24 x 24 x 11 1/2
SLHDS152531	25 x 31 x 15	24 7/8 x 30 7/8 x 15	24 x 30 x 11 1/2

- Models SLHDS092531 and SLHDS152531 are supplied with six (6) Spring Lock Bolts to secure HEPA Filter.
- Please see FILTER-LINE™ Series information for HEPA Filter specifications.

MODEL NUMBER KEY

SLHDS**152525**
Insert model number extension to complete model number.

SL- SURE-LINE™
HDS- HD Spring Loaded HEPA Frame
15- Unit Depth
25- Unit Width
25- Unit Height