

SUBMITTAL DATA
SURE-LINE™
SERIES HDS
SD-SLHDS-03A
JANUARY 2003

HIGH EFFICIENCY AIR FILTRATION EQUIPMENT

SURE-LINE™
SERIES HDS
HEAVY DUTY SPRING LOADED HEPA FILTER HOLDING FRAME

PROJECT _____ **DATE** _____

MODEL NUMBER | **QUANTITY** | **SYSTEM IDENTIFICATION** | **WIDTH** | **HEIGHT** | **DEPTH**

_____ | _____ | _____ | _____ | _____ | _____

MODEL NUMBER | **QUANTITY** | **SYSTEM IDENTIFICATION** | **WIDTH** | **HEIGHT** | **DEPTH**

_____ | _____ | _____ | _____ | _____ | _____

AVAILABLE UNIT OPTIONS

- SPECIAL UNIT MATERIAL** **HIGH TEMPERATURE**
 SPECIAL UNIT FINISH **SPECIALTY OPTION**

NOTE: Please see SURE-LINE™ SERIES Option Data for details on unit options.

UNIT CONFIGURATION/FILTER FRAME BANK INFORMATION

The above mentioned quantity of frames will be shipped individually and **field** assembled into a filter bank for **each** system ID shown. The frame bank system will be _____ frames wide by _____ frames high. The approximate field assembled frame bank dimensions are shown at right.

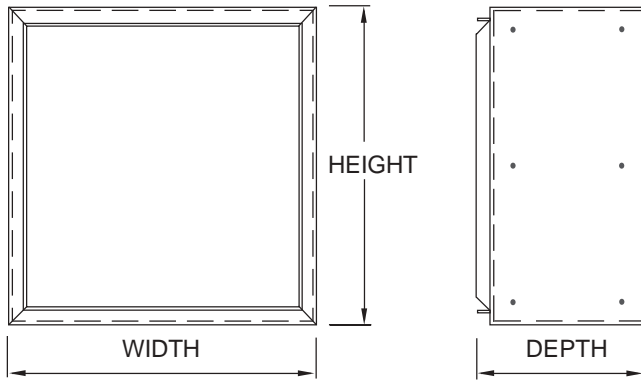
NOTE: Frame bank dimensions do not include the use of stiffeners.

Disregard if HDS Frames are used individually!

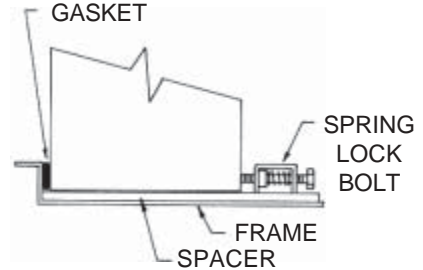
QUANTITY	MODEL NUMBER	SIZE
ARRANGED	FRAME BANK DIMENSIONS (WxHxD)	

UNIT DIMENSIONAL DATA

UPSTREAM SIDE CONFIGURATION



AIR
←
FLOW



STANDARD MATERIALS OF CONSTRUCTION	
FRAME	16 GAUGE ALUMINIZED STEEL
SPRING LOCK BOLT	3/8-16 x 2 1/2 ZINC PLATED BOLT

SURE-LINE™ HDS HEPA Filter Holding Frame depth is 9 3/8" for 6" HEPA Filters and 15" for 12" HEPA Filters.

MECHANICAL SPECIFICATIONS

HEPA FILTER HOLDING FRAMES

HEPA Filter Holding Frames shall be **SURE-LINE™ Series HDS** as manufactured by BLC Industries, Inc. Louisville, KY, Tempe, AZ. Frame sizing shall be determined from the equipment schedule. Frames shall be manufactured from 16 gauge aluminized steel. Holding Frames shall be solid welded at all joints to prevent air leakage. Units shall be supplied with pre-punched alignment and mounting holes for easy bank assembly. Frame shall incorporate Spring Lock Bolts to effectively seal HEPA Filters. Manufacturer shall certify and identify that HEPA Filter Holding Frames are **Made in the U.S.A.**

SUGGESTED FRAME INSTALLATION INSTRUCTIONS

SURE-LINE™ Series HDS Holding Frames may be used individually or assembled into filter bank assemblies using mounting holes provided. Frame banks, depending upon overall size, may need additional supports. All frame joints should be caulked to prevent any air bypass. HDS Frames require upstream access to service air filters. To install HEPA Filters, insert filter into holding frame. HEPA Filter should be in correct alignment due to locating spacers. Push filter into rear of frame until filter gasket reaches the holding frame sealing flange. Install (4) Spring Lock Bolts by inserting bolts into the slot in spacer. Tighten bolts with equal pressure until a suitable compression of the HEPA Filter gasket has been achieved.

Corporate Headquarters
P.O. Box 14187,
Louisville, Kentucky 40214
Phone: (502) 366-6002
Fax: (502) 366-6255

E-Mail: askus@blcind.com

BLC-WEST
Phone: (480) 839-5333
Fax: (480) 839-1584

www.blcind.com

We reserve the right to make changes in product design and product specifications without prior notice or obligation.

BLC INDUSTRIES INC.
Breathe Easy, We Have The Line On Air Filtration.